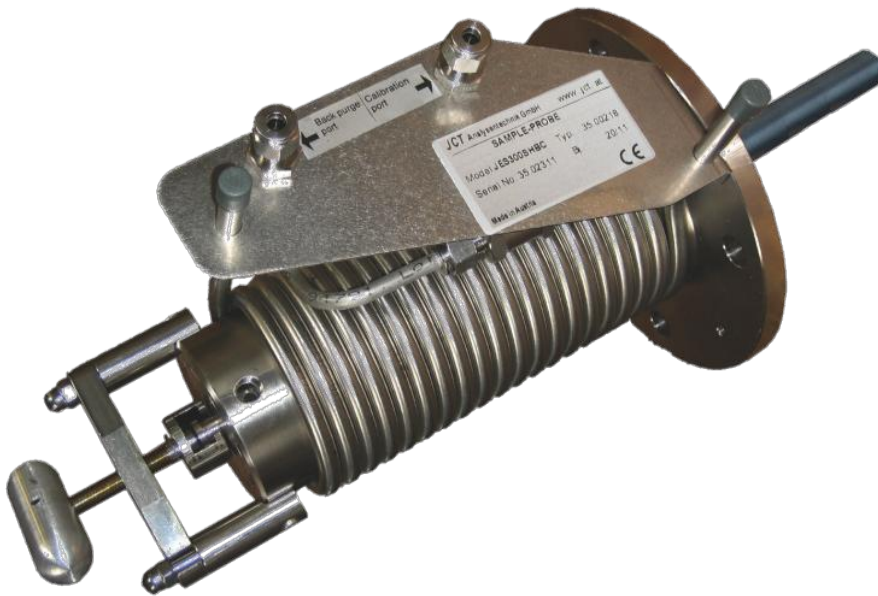


Innovation on Gas Analysis

JES 301G Gas Sample Probe steam heated



APPLICATION

- For continuous gas sampling in processes with dust content and humidity
- Removing aerosols and dust from sample
- Extractive gas analysis
- Emission monitoring and process monitoring
- For outdoor and indoor use, also in ATEX zone 1 and 2

BENEFITS

- Convenient filter replacement
- No electric parts
- Low maintenance operation

FEATURES

- Filter replacement without tools
- Filtration from outside to inside
- Steam heated
- Temperature control via steam pressure
- Calibration gas port (option)
- Backpurge port (option)
- Heated sample hose is connected directly to steam heated sampling probe
- For high dust concentrations
- Made of stainless steel
- Wide range of accessories



JCT
Analytentechnik
GmbH

Sample Probes

Heated Hoses

Conditioners

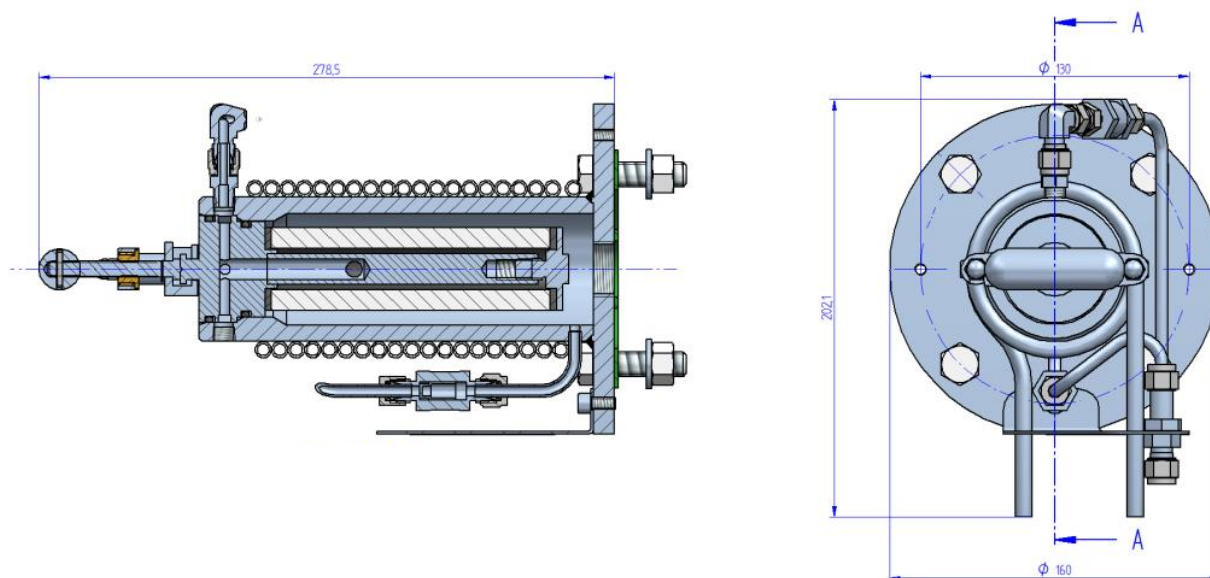
NOx converter

Accessories



www.jct.at

TECHNICAL DATA



SPECIFICATIONS

Filter element	Bonded silicon carbide; pore size 2µm; 40/20x135 mm surface coated 0,2µm
Option	
Operating pressure	max. 200 kPa abs.
Option	max. 700 kPa abs.
Mounting flange	DN 65, PN6; DIN 2573; SS316Ti
Option	2" ANSI-flange, 150lb.
Sample gas inlet	G3/4" female thread
Sample gas outlet	1/8" NPT female thread
Test gas port (option)	6mm bulkhead union, SS316
Backpurge port (option)	6mm bulkhead union, SS316
Steam ports	8mm stub,s, SS316

SPECIFICATIONS

Mounting angle	recommended 5°-15° incline to allow condensate drainage
Operating temperature	max. 200°C (corresponds to 14 barg of superheated LP steam)
Option	max. 315°C
Operating pressure (steam pipe)	max. 40 bar
Ambient temperature	-40°C ... +80°C
Weight	approx. 7 kg
Gas wetted parts	SS316Ti, SiC, Viton® (FKM)
Approval/Sign	CE

ORDER CODE

Art.Nr.	Modell	Filter		Options / Equipment			Flange	
		2µm SiC	0,2µm surface coated	Backpurge Port *1	Calibration Port *1	Steam heated	DN65/PN6	2" ANSI
35.00240	JES 301G	X				X	X	
35.00241	JES 301BG		X	X		X	X	
35.00242	JES 301CG	X			X	X	X	
35.00243	JES 301BCG		X	X	X	X	X	
35.00250	JES 301GZ	X				X		X
35.00251	JES 301BGZ		X	X		X		X
35.00252	JES 301CGZ	X			X	X		X
35.00253	JES 301BCGZ		X	X	X	X		X

*1 ...with non return valve

Scope of delivery: device, mounting material, gasket for flange, gasket for sampling pipe, operating manual

ORDER CODE

SAMPLING PIPES, Ø 26,9 mm OD		
Part No.	Description	Length
Sampling pipe SS316Ti max. 600°C		
35.00060	ER-S10	1000 mm
35.00061	ER-S15	1500 mm
35.00062	ER-S20	2000 mm
35.00063	ER-S25	2500 mm
35.00065	ER-S30	3000 mm
Sampling pipe Kanthal max. 1200°C		
35.00050	ER-K10	1000 mm
35.00051	ER-K15	1500 mm
35.00052	ER-K20	2000 mm
Sampling pipe Teflon® (PTFE) max. 140°C		
35.00080	ER-T10	1000 mm
35.00081	ER-T15	1500 mm
35.00082	ER-T05	500 mm
Sampling pipe 1.4841 max. 1100°C		
35.00070	ER-H10	1000 mm
35.00071	ER-H15	1500 mm

IN-SITU PRE FILTER		
Part No.	Description	Length
In-Situ pre filter, pore size 3 µm, SS316L, max. 550°C, Ø 50 mm OD		
35.00703	HD-03	Length 300 mm, up to approx. 10 g/m³
35.00705	HD-05	Length 500 mm, up to approx. 20 g/m³
35.00710	HD-10	Length 1000 mm, up to approx. 30 g/m³
In-Situ pre filter with V-deflector, pore size 3 µm, SS316L, max. 550°C, Ø 50 mm OD		
35.00803	HD-03V	Length 300 mm, up to approx. 10 g/m³
35.00805	HD-05V	Length 500 mm, up to approx. 20 g/m³
35.00810	HD-10V	Length 1000 mm, up to approx. 30 g/m³
Extension tube for In-Situ pre filter SS316		
35.00910	HD-ET10	1000 mm
35.00920	HD-ET20	2000 mm
35.00925	HD-ET25	2500 mm
Extension tube for In-Situ pre filter Kanthal		
35.00926	HD-ETK25	2500 mm
Gasket for extension / sampling tube		
35.00950	HD-ETGK	3/4", 27x38,2, SIL C 4400

FLANGE ADAPTER		
Part No.	Material	Dimensions
35.08010	SS304 (1.4301)	DN65/PN6 to 2 1/2"
35.08030	SS304 (1.4301)	DN65/PN6 to DN80/PN6
35.08020	SS304 (1.4301)	DN65/PN6 to 3"
35.08040	SS316Ti (1.4571)	DN65/PN6 to DN100/PN25
35.01401	Thermal spacer	

GASKET FOR FLANGE	
Part No.	Description
35.00955	Flange gasket DN65
K3501004	Flange gasket ANSI 2"

ACCESSORIES	
Part No.	Description
35.90080	Male connector SS316, for 6 mm tube
35.90081	Male connector SS316, for 8 mm tube
35.90082	Blind plug, SS316
35.90083	Male connector, SS316, for 1/4" tube
35.90084	Male connector, SS316, for 3/8" tube
35.90085	Elbow connector, SS316, for 6 mm tube
35.90086	Male connector, SS316, for 6 mm tube
35.90087	Adapter for G3/8" connector SS316, for 10 mm tube
35.00249	Stainless steel housing for units with DN65 flange
35.00259	Stainless steel housing for units with 2" ANSI flange

CONSUMABLE PARTS	
Part No.	Description
35.90100	Consumable parts kit, consisting of 1 x O-ring A and B 1 x filter element bonded SiC F10, 2 x gaskets Viton®
35.90101	Consumable parts kit, consisting of 1 x O-ring A and B, 1 x surface coated filter element, 2 x gaskets Viton®
35.90010	O-ring A, 200°C, Viton® (FKM)
35.90011	O-ring B, 200°C, Viton® (FKM)
35.90012	O-ring A, 315°C, Kalrez® (FFKM)
35.90013	O-ring B, 315°C, Kalrez® (FFKM)
35.90014	Filter element bonded SiC F10, 2 µm 40/20 x 135mm
35.90018	Surface coated filter element, 40/20x135mm
35.90015	Gasket for filter element, 200°C, Viton® (FKM)
35.90016	Gasket for filter element, 315°C, Kalrez® (FFKM)

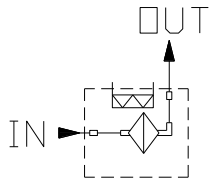
SPARE PARTS	
Part No.	Description
35.90070	T-handle assembly kit
35.90071	Extractor kit complete
K3522001	Non return valve

ACCESSORIES FOR BACK PURGE VERSION		
Part No.	Type	Description
35.00012	JES301K	Back purge controller 230VAC
35.00013	JES301KX	Back purge controller 115VAC
35.00110	JES301KE1	Valve box for back purge 230VAC for ATEX Zone 1
35.00111	JES301KE1Y	Valve box for back purge 24VDC for ATEX Zone 1
35.00112	JES301KE1	Valve box for back purge 120VADC for ATEX Zone 1

FLOW CHARTS

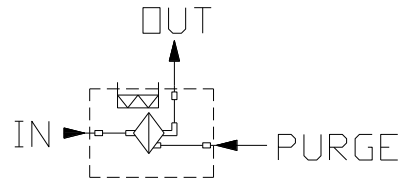
Basic models

(Art.No. 35.00240, 35.0025035.00321)



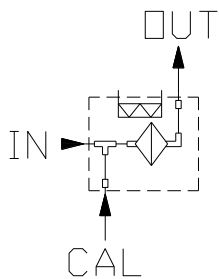
Models with backpurge port

(Art.No. 35.00241, 35.00251)



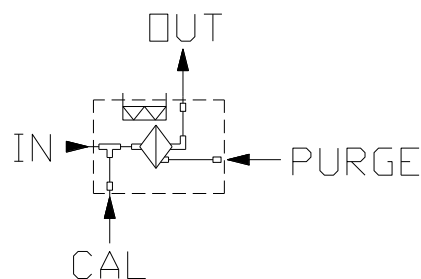
Models with calibration port

(Art.No. 35.00242, 35.00252)



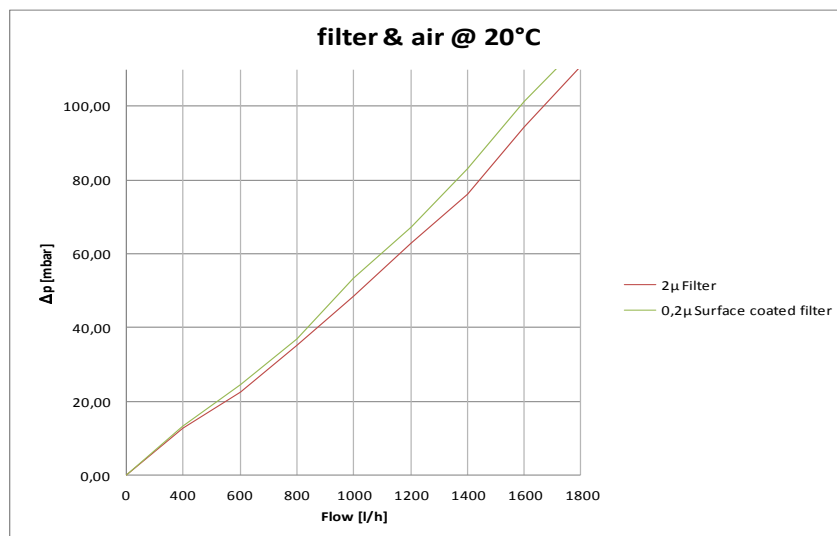
Models with backpurge and calibration port

(Art.No. 35.00243, 35.00253)



FLOW DIAGRAM

Pressure Drop (with new filter)



Specification subject to change without notice.

PDS_E_JES301G_v1.0

JCT Analysetechnik GmbH

Werner Heisenberg-Straße 4 A-2700 Wiener Neustadt
 Tel. +43 (0) 2622 / 87201 Fax +43 (0) 2622 / 872011
 E-Mail: sales@jct.at Web: www.jct.at

