

Innovation in Gas Analysis

JCL-301 Compact Gas Conditioning System



APPLICATION

- For extractive gas analysis
- For emission and process monitoring
- Continuous sample gas conditioning of humid process gases
- Continuous drying of sample gas to a precise low and constant outlet dew point
- Minimises water vapour cross sensitivities and volumetric errors

BENEFITS

- Complete solution for a great number of applications
- Longterm reliable reproducible measuring results
- Optimum operational safety due to self-monitoring
- Extremely precise long term stable dew point even under varying loads
- Fast response time due to low dead volume
- Very low dissolution rates
- Continuous condensate removal
- Low maintenance operation
- Easy to maintain design

FEATURES

- Individual configuration due to various expansion options
- Basic device with high-performance compressor sample gas cooler
- 1 or 2 independant sample gas paths
- Integrated condensate pumps
- Speed-controlled fan
- Connections for external sample gas pump
- 11 status-LED's with event memory
- 2 status contacts
- Additional options:
 - Easy to maintain robust fine dust filter
 - Corrosion resistant flowmeter with precise needle valve
 - Reliable condensate monitoring
 - Acid dosing pump
 - RS 485 interface



JCT

Analysentechnik
GmbH

Gas Sampling Probes

Heated Sample Lines

Sample Gas Coolers

Condensate
Treatment

Accessories

Gas Conditioning
Systems

Sample Gas
Converters

MADE IN AUSTRIA



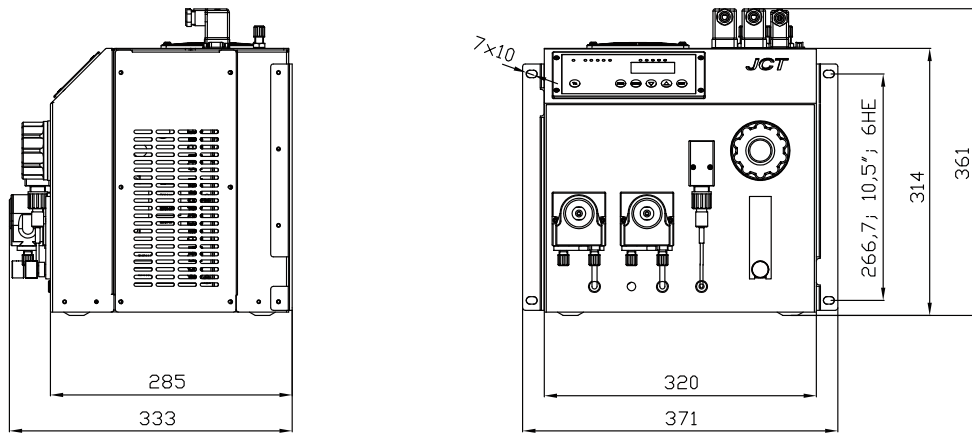
www.jct.at

TECHNICAL DATA

Model	JCL-301
Description	compact gas conditioning system
Cooling principle	compressor cooling with hot bypass technology
Number of gas paths	1 - 2
Operation	
Flow rate*	max. 120 l/hr
Gas temperature inlet*	max. +140°C
Dew point inlet*	max. +80°C
Dew point outlet	+3°C
Dew point stability (for constant inlet conditions)	±0,1K
Ambient temperature	+5...+45 °C
Operating pressure	0,2...2,2 bara
Ready for operation	< 10 min
Pressure drop at max. flow rate	2 mbar
Construction	
Dimensions over all (W x H x D)	320 x 310 x 328 mm
Installation	stand alone or wall mounting
Operating position	horizontal
Weight	approx. 22 kg
Housing, colour	sheet steel 1,5 mm, powder coated, RAL 1016 S
Material heat exchanger	PVDF
Dead volume per gas path	48 ml
Connection sample gas / condensate outlet	PVDF hose fitting DN 4/6 mm
Approvals / signs	CE
Electrics	
Power supply	220...240 VAC 50/60 Hz or 100...115 VAC 50/60 Hz
Power consumption (depending on load, ambient temperature and configuration)	200...345 VA
Connection power / status signal	3 x connector EN175301-803 form A/B with PG 9 - panduit, 3/4 pole
Fusing	external on installation site, fuse characteristic C: 230 VAC 6 A; 115 VAC 10 A
Protection class	IP 20 (EN 60529)
On - time	100 %
Alarm set points	<0 / >+10°C
Status relay	1 volt free changeover contact
Pump relay	1 volt free contact NC
Switching capacity relays	max. 250 VAC / 8 A(1,5 A at 250 VDC); min. 5 VADC 5 mA
Data interface (option)	DB 9-female
Interface protocol (option)	RS 485 / ST Bus
Bus cable length max.	1000 m

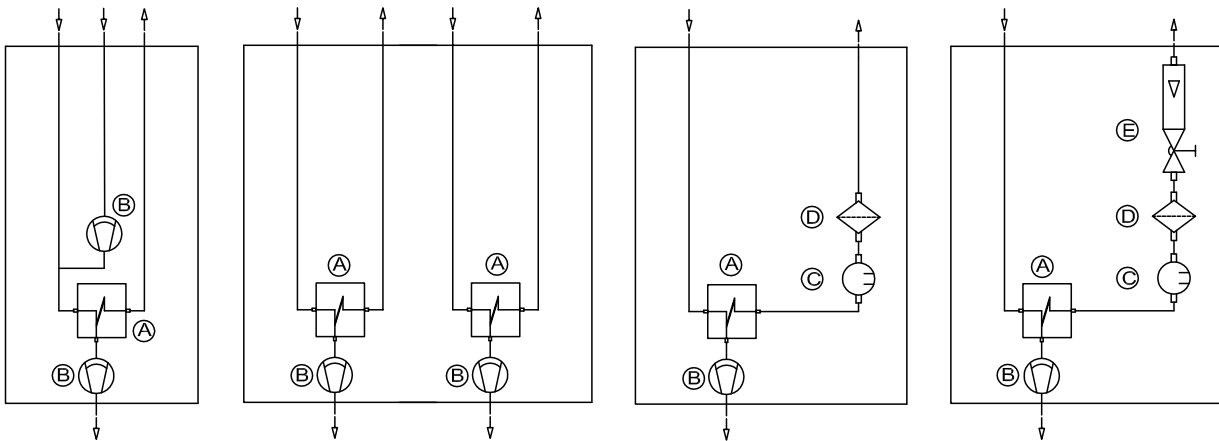
* Results from the effective cooling capacity at 25°C ambient temperature and 3°C outlet dew point and can be influenced by further operational parameters

DIMENSIONS



Dimensions in mm

APPLICATION EXAMPLES / GAS FLOW DIAGRAMS

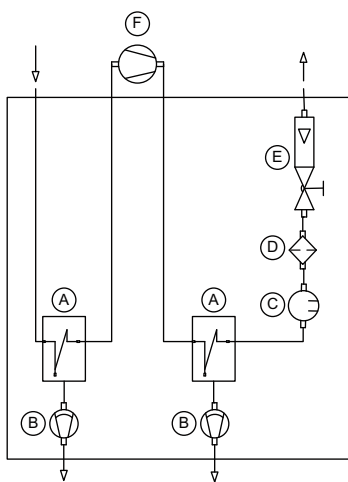


Part No.: JCL-301.2130000

Part No.: JCL-301.2220000

Part No.: JCL-301.2111100

Part No.: JCL-301.2111110



JCL-301 fully equipped Part No.: JCL-301.2221110

A	Gas heat exchanger
B	Condensate pump / dosing pump
C	Condensate sensor

D	Fine dust filter
E	Flow meter with needle valve
F	External sample gas pump (not included, suitable sample pumps are to be found in chapter 5)

ORDER CODES

JCL-301

Power supply		115 VAC 50/60 Hz	1																			
		230 VAC 50/60 Hz	2																			
Gas heat exchangers	A	1 Gas heat exchanger		1																		
		2 Gas heat exchangers		2																		
Condensate pumps	B	1 Condensate pumps JSR-25																				
		2 Condensate pumps JSR-25																				
		1 Dosing pump JSR-25 + 1 condensate pump																				
Fine dust filter	D	Without fine dust filter																		0		
		1 Fine dust filter JF-1 incl. PTFE-filter element																			1	
Condensate detectors	C	Without condensate detectors																			0	
		1 Condensate detector KW-2																				1
Flow meter with needle valve	E	Without flow meter																			0	
		1 Flow meter 10....100 NI/hr																				1
Option		Without additional option																				0
		JCT VISU-system software, remote control, RS485 interface																				

Order code

JCL-301.

Some possible combinations of options are technically futile and therefore not available. Please ask the JCT sales team for advice.

JCT Analysetechnik GmbH

Werner Heisenberg-Straße 4 A-2700 Wiener Neustadt
 Tel. +43 (0) 2622 / 87201 Fax +43 (0) 2622 / 872011
 E-Mail: sales@jct.at Web: www.jct.at

Subject to change without notice

page 4

PDS_E_JCL301_v3.0

